



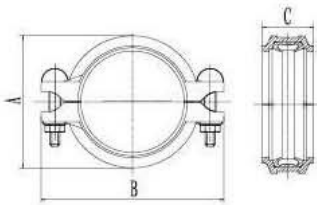
*Best quality ☺ Cross the world*



**DINSEN IMPEX CORP**

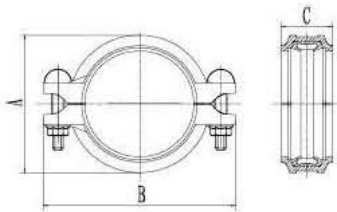


## Rigid Coupling XGQT1



Nominal Size mm/in	Pipe OD. mm/in	Working Pressure psi/Mpa	Dimensions mm/in			Bolt Size
			A mm/in	B mm/in	C mm/in	No.-Size in
25 1	33.7 1.327	300 psi 2.07 Mpa	56 2.20	98 3.85	44 1.74	3/8*45-2
32 1¼	42.4 1.669		65 2.55	108 4.25	44 1.74	3/8*45-2
40 1½	48.3 1.9		72 2.84	114 4.48	44 1.74	3/8*45-2
50 2	60.3 2.375		84 3.30	126 4.96	46 1.81	3/8*55-2
65 2½	73 2.875		97 3.81	140 5.52	46 1.81	3/8*55-2
65 2½	76.1 3		100 3.93	142 5.59	46 1.81	3/8*55-2
80 3	88.9 3.5		114 4.48	154 6.06	46 1.81	3/8*55-2
100 4	108 4.25		135 5.31	186 7.32	50 1.96	1/2*65-2
100 4	114.3 4.5		138 5.43	192 7.55	50 1.96	1/2*65-2
125 5	133 5.25		162 6.37	213 8.38	50 1.96	1/2*75-2
125 5	139.7 5.5		170 6.73	220 8.66	50 1.96	1/2*75-2
125 5	141.3 5.563		171 6.73	222 8.74	50 1.96	1/2*75-2
150 6	159 6.25		190 7.48	241 9.48	50 1.96	1/2*75-2
150 6	165.1 6.5		196 7.71	248 9.76	50 1.96	1/2*75-2
150 6	168.3 6.625		200 7.87	252 9.92	50 1.96	1/2*75-2
200 8	219.1 8.625		258 10.15	322 12.67	60 2.36	5/8*95-2
250 10	273 10.75		318 12.51	400 15.74	62 2.44	3/4*110-2
300 12	323.9 12.750		372 14.64	454 17.87	64 2.51	3/4*120-2

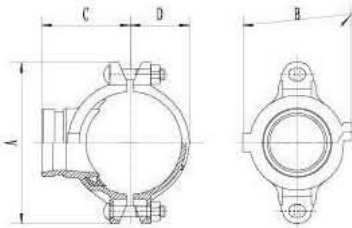
## Flexible Coupling XGQT2



Nominal Size mm/in	Pipe OD. mm/in	Working Pressure psi/Mpa	Dimensions mm/in			Bolt Size
			A mm/in	B mm/in	C mm/in	No.-Size in
25 1	33.7 1.327	300 psi 2.07 Mpa	56 2.20	98 3.85	44 1.74	3/8*45-2
32 1¼	42.4 1.669		65 2.55	108 4.25	44 1.74	3/8*45-2
40 1½	48.3 1.9		72 2.84	114 4.48	44 1.74	3/8*45-2
50 2	60.3 2.375		84 3.30	126 4.96	46 1.81	3/8*55-2
65 2½	73 2.875		97 3.81	140 5.52	46 1.81	3/8*55-2
65 2½	76.1 3		100 3.93	142 5.59	46 1.81	3/8*55-2
80 3	88.9 3.5		114 4.48	154 6.06	46 1.81	3/8*55-2
100 4	108 4.25		135 5.31	186 7.32	50 1.96	1/2*65-2
100 4	114.3 4.5		138 5.43	192 7.55	50 1.96	1/2*65-2
125 5	133 5.25		162 6.37	213 8.38	50 1.96	1/2*75-2
125 5	139.7 5.5		170 6.73	220 8.66	50 1.96	1/2*75-2
125 5	141.3 5.563		171 6.73	222 8.74	50 1.96	1/2*75-2
150 6	159 6.25		190 7.48	241 9.48	50 1.96	1/2*75-2
150 6	165.1 6.5		196 7.71	248 9.76	50 1.96	1/2*75-2
150 6	168.3 6.625		200 7.87	252 9.92	50 1.96	1/2*75-2
200 8	219.1 8.625		258 10.15	322 12.67	60 2.36	5/8*95-2
250 10	273 10.75		318 12.51	400 15.74	62 2.44	3/4*110-2
300 12	323.9 12.750		372 14.64	454 17.87	64 2.51	3/4*120-2

Mechanical Tee Grooved outlet

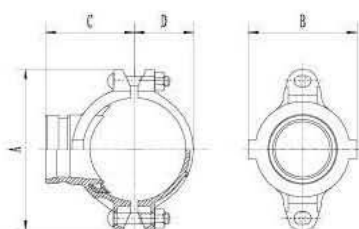
XGQT3



Nominal Size mm/in	Pipe OD. mm/in	Working Pressure psi/Mpa	Hole Dia. Mm/in +1.6,0/+0.063,0	Dimensions mm/in				Bolt Size
				A	B	C	D	
50 × 25 2 × 1	60.3 × 33.7 2.375 × 1.315	300 psi 2.07 Mpa	38 1.50	118 4.64	71 2.80	69 2.71	40 1.57	3/8*55-2
50 × 32 2 × 1¼	60.3 × 42.4 2.375 × 1.660		46 1.81	118 4.64	75 2.95	69 2.71	40 1.57	3/8*55-2
50 × 40 2 × 1½	60.3 × 48.3 2.375 × 1.900		46 1.81	118 4.64	75 2.95	69 2.71	40 1.57	3/8*55-2
65 × 25 2½ × 1	73.0 × 33.7 2.875 × 1.315		38 1.50	133 5.23	72 2.83	77 3.03	47 1.85	3/8*55-2
65 × 32 2½ × 1¼	73.0 × 42.4 2.875 × 1.660		46 1.81	133 5.23	81 3.18	77 3.03	47 1.85	3/8*55-2
65 × 40 2½ × 1½	73.0 × 48.3 2.875 × 1.900		53 2.08	133 5.23	86 3.38	77 3.03	47 1.85	3/8*55-2
65 × 25 2½ × 1	76.1 × 33.7 3.000 × 1.315		38 1.50	136 5.35	72 2.83	78 3.07	49 1.93	3/8*55-2
65 × 32 2½ × 1¼	76.1 × 42.4 3.000 × 1.660		46 1.81	136 5.35	81 3.18	78 3.07	49 1.93	3/8*55-2
65 × 40 2½ × 1½	76.1 × 48.3 3.000 × 1.900		53 2.08	136 5.35	86 3.38	78 3.07	49 1.93	3/8*55-2
80 × 25 3 × 1	88.9 × 33.7 3.500 × 1.315		38 1.50	150 5.98	73 2.87	85 3.33	56 2.20	3/8*55-2
80 × 32 3 × 1¼	88.9 × 42.4 3.500 × 1.660		46 1.81	150 5.98	82 3.22	85 3.33	56 2.20	3/8*55-2
80 × 40 3 × 1½	88.9 × 48.3 3.500 × 1.900		53 2.08	150 5.90	87 3.42	85 3.33	56 2.20	3/8*55-2
80 × 50 3 × 2	88.9 × 60.3 3.500 × 2.375		61 2.40	150 5.90	100 3.93	85 3.33	56 2.20	3/8*55-2
80 × 65 3 × 2½	88.9 × 73.0 3.500 × 2.875		61 2.40	150 5.90	100 3.93	85 3.33	56 2.20	3/8*55-2
80 × 65 3 × 2½	88.9 × 76.1 3.500 × 3.000		61 2.40	150 5.90	100 3.93	85 3.33	56 2.20	3/8*55-2
100 × 50 4 × 2	108.0 × 60.3 4.250 × 2.375		61 2.40	172 6.77	106.5 4.19	92 3.78	64.5 2.54	1/2*65-2
100 × 65 4 × 2½	108.0 × 76.1 4.250 × 3.000		81 3.18	172 6.77	106.5 4.19	92 3.78	64.5 2.54	1/2*65-2
100 × 25 4 × 1	114.3 × 33.7 4.500 × 1.315		38 1.50	182 7.16	73 2.87	99 3.90	70 2.76	1/2*65-2
100 × 32 4 × 1¼	114.3 × 42.4 4.500 × 1.660		46 1.81	182 7.16	82 3.22	99 3.90	70 2.76	1/2*65-2
100 × 40 4 × 1½	114.3 × 48.3 4.500 × 1.900		53 2.08	182 7.16	87 3.42	99 3.90	70 2.76	1/2*65-2
100 × 50 4 × 2	114.3 × 60.3 4.500 × 2.375		61 2.40	182 7.16	100 3.93	99 3.90	70 2.76	1/2*65-2
100 × 65 4 × 2½	114.3 × 73.0 4.500 × 2.875		81 3.18	182 7.16	118 4.64	99 3.90	70 2.76	1/2*65-2
100 × 65 4 × 2½	114.3 × 76.1 4.500 × 3.000		81 3.18	182 7.16	118 4.64	99 3.90	70 2.76	1/2*65-2
100 × 80 4 × 3	114.3 × 88.9 4.500 × 3.500		86 3.38	182 7.16	124 4.88	99 3.90	70 2.76	1/2*65-2

### Mechanical Tee Grooved outlet

## XGQT3

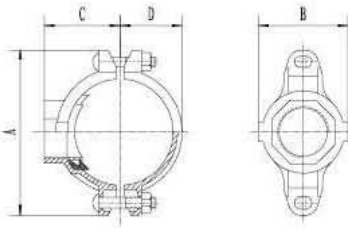


Nominal Size mm/in	Pipe OD. mm/in	Working Pressure psi/Mpa	Hole Dia. Mm/in +1.6,0/+0.063,0	Dimensions mm/in				Bolt Size
				A	B	C	D	
125 × 50 5 × 2	139.7 × 60.3 5.500 × 2.375	300 psi 2.07 Mpa	61 2.40	215 8.46	102 4.01	113 4.44	83 3.26	1/2*75-2
125 × 65 5 × 2½	139.7 × 76.1 5.500 × 3.000		81 3.18	215 8.46	119 4.68	113 4.44	83 3.26	1/2*75-2
125 × 80 5 × 3	139.7 × 88.9 5.500 × 3.500		86 3.38	215 8.46	134 5.27	113 4.44	83 3.26	1/2*75-2
125 × 100 5 × 4	139.7 × 114.3 5.500 × 4.500		114 4.48	215 8.46	158 6.22	115 4.52	83 3.26	1/2*75-2
125 × 50 5 × 2	141.3 × 60.3 5.563 × 2.375		61 2.40	215 8.46	102 4.01	114 4.48	83 3.26	1/2*75-2
125 × 65 5 × 2½	141.3 × 76.1 5.563 × 3.000		81 3.18	215 8.46	119 4.64	114 4.48	83 3.26	1/2*75-2
125 × 80 5 × 3	141.3 × 88.9 5.563 × 3.500		86 3.38	215 8.46	134 5.27	114 4.48	83 3.26	1/2*75-2
125 × 100 5 × 4	141.3 × 114.3 5.563 × 4.500		114 4.48	215 8.46	158 6.22	115 4.52	83 3.26	1/2*75-2
150 × 50 6 × 2	159.0 × 60.3 6.250 × 2.375		61 2.40	230 9.05	98 3.85	123 4.84	90 3.54	9/16*75-2
150 × 65 6 × 2½	159.0 × 76.1 6.250 × 3.000		81 3.18	230 9.05	121 4.76	123 4.84	90 3.54	9/16*75-2
150 × 80 6 × 3	159.0 × 88.9 6.250 × 3.500		86 3.38	230 9.05	134 5.27	123 4.84	90 3.54	9/16*75-2
150 × 100 6 × 4	159.0 × 108.0 6.250 × 4.250		114 4.48	230 9.05	155 6.10	123 4.84	90 3.54	9/16*75-2
150 × 100 6 × 4	159.0 × 114.3 6.250 × 4.500		114 4.48	230 9.05	155 6.10	123 4.84	90 3.54	9/16*75-2
150 × 50 6 × 2	165.1 × 60.3 6.500 × 2.375		61 2.40	240 9.44	102 4.01	126 4.96	96 3.77	9/16*75-2
150 × 65 6 × 2½	165.1 × 76.1 6.500 × 3.000		81 3.18	240 9.44	119 4.68	126 4.96	96 3.77	9/16*75-2
150 × 80 6 × 3	165.1 × 88.9 6.500 × 3.500		86 3.38	240 9.44	134 5.27	126 4.96	96 3.77	9/16*75-2
150 × 100 6 × 4	165.1 × 114.3 6.500 × 4.500		114 4.48	240 9.44	158 6.22	128 5.04	96 3.77	9/16*75-2
150 × 50 6 × 2	168.3 × 60.3 6.625 × 2.375		61 2.40	244 9.60	102 4.01	128 5.04	97 3.81	9/16*75-2
150 × 65 6 × 2½	168.3 × 73.0 6.625 × 2.875		81 3.18	244 9.60	119 4.68	128 5.04	97 3.81	9/16*75-2
150 × 65 6 × 2½	168.3 × 76.1 6.625 × 3.000		81 3.18	244 9.60	119 4.68	128 5.04	97 3.81	9/16*75-2
150 × 80 6 × 3	168.3 × 88.9 6.625 × 3.500		86 3.38	244 9.60	134 5.27	128 5.04	97 3.81	9/16*75-2
150 × 100 6 × 4	168.3 × 114.3 6.625 × 4.500		114 4.48	244 9.60	158 6.22	130 5.11	97 3.81	9/16*75-2
200 × 50 8 × 2	219.1 × 60.3 8.625 × 2.375		61 2.40	308 12.12	102 4.01	153 6.02	124 4.88	5/8*95-2
200 × 65 8 × 2½	219.1 × 76.1 8.625 × 3.000		81 3.18	308 12.12	119 4.68	153 6.02	124 4.88	5/8*95-2
200 × 80 8 × 3	219.1 × 88.9 8.625 × 3.500		86 3.38	308 12.12	134 5.27	153 6.02	124 4.88	5/8*95-2
200 × 100 8 × 4	219.1 × 114.3 8.625 × 4.500		114 4.48	308 12.12	158 6.22	155 6.10	124 4.88	5/8*95-2



Mechanical Tee Threaded outlet

XGQT3S

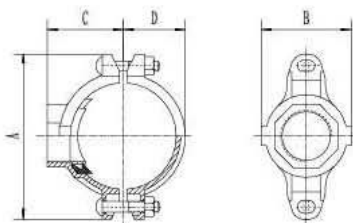


Nominal Size mm/in	Pipe OD. mm/in	Working Pressure psi/Mpa	Hole Dia. Mm/in +1.6,0/+0.063,0	Dimensions mm/in				Bolt Size
				A	B	C	D	
50×15 2×½	60.3×21.3 2.375×0.825	300 psi 2.07 Mpa	30 1.18	116 4.57	68 2.68	58 2.28	40 1.57	3/8*55-2
50×20 2×¾	60.3×26.9 2.375×1.050		30 1.18	116 4.57	68 2.68	58 2.28	39 1.53	3/8*55-2
50×25 2×1	60.3×33.7 2.375×1.315		38 1.50	118 4.64	71 2.80	58 2.36	40 1.57	3/8*55-2
50×32 2×1¼	60.3×42.4 2.375×1.660		46 1.81	118 4.64	75 2.95	60 2.56	40 1.57	3/8*55-2
50×40 2×1½	60.3×48.3 2.375×1.900		46 1.81	118 4.64	75 2.95	63 2.56	40 1.57	3/8*55-2
65×15 2½×½	73.0×21.3 2.875×0.825		30 1.18	144 5.66	71 2.80	66 2.72	49 1.93	3/8*55-2
65×20 2½×¾	73.0×26.9 2.875×1.050		30 1.18	144 5.66	71 2.80	66 2.72	49 1.93	3/8*55-2
65×25 2½×1	73.0×33.7 2.875×1.315		38 1.50	133 5.23	72 2.83	67 2.72	47 1.85	3/8*55-2
65×32 2½×1¼	73.0×42.4 2.875×1.660		46 1.81	133 5.23	81 3.18	69 2.87	47 1.85	3/8*55-2
65×40 2½×1½	73.0×48.3 2.875×1.900		53 2.08	133 5.23	86 3.38	69 2.87	47 1.85	3/8*55-2
65×15 2½×½	76.1×21.3 3.000×0.825		30 1.18	137 5.39	71 2.80	68 2.72	49.5 1.95	3/8*55-2
65×20 2½×¾	76.1×26.9 3.000×1.050		30 1.18	137 5.39	71 2.80	68 2.72	49.5 1.95	3/8*55-2
65×25 2½×1	76.1×33.7 3.000×1.315		38 1.50	136 5.35	72 2.83	69 2.72	49 1.93	3/8*55-2
65×32 2½×1¼	76.1×42.4 3.000×1.660		46 1.81	136 5.35	81 3.18	71 2.72	49 1.93	3/8*55-2
65×40 2½×1½	76.1×48.3 3.000×1.900		53 2.08	136 5.35	86 3.38	71 2.72	49. 1.93	3/8*55-2
80×15 3×½	88.9×21.3 3.500×0.825		30 1.18	152 5.98	72.5 2.85	74 3.15	56.5 2.22	3/8*55-2
80×20 3×¾	88.9×26.9 3.500×1.050		30 1.18	152 5.98	72.5 2.85	74 3.15	56.5 2.22	3/8*55-2
80×25 3×1	88.9×33.7 3.500×1.315		38 1.50	150 5.98	73 2.87	75 3.15	56 2.20	3/8*55-2
80×32 3×1¼	88.9×42.4 3.500×1.660		46 1.81	150 5.98	82 3.22	77 3.15	56 2.20	3/8*55-2
80×40 3×1½	88.9×48.3 3.500×1.900		53 2.08	150 5.90	87 3.42	77 3.15	56 2.20	3/8*55-2

The measurements of products maybe changed for the technical reason without responsibility note, please feel free to contact technical Dept.

### Mechanical Tee Threaded outlet

## XGQT3S

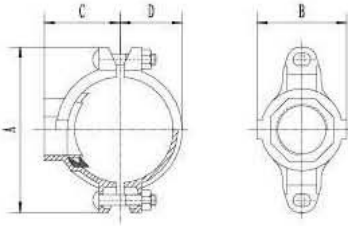


Nominal Size mm/in	Pipe OD. mm/in	Working Pressure psi/Mpa	Hole Dia. Mm/in +1.6,0/+0.063,0	Dimensions mm/in				Bolt Size
				A	B	C	D	
80 × 50 3 × 2	88.9 × 60.3 3.500 × 2.375	300 psi 2.07 Mpa	61 2.40	150 5.90	100 3.93	81 3.15	56 2.20	3/8*55-2
100 × 25 4 × 1	108.0 × 33.7 4.250 × 1.315		38 1.50	172 6.77	78.5 3.09	87 3.43	64.5 2.54	1/2*65-2
100 × 32 4 × 1¼	108.0 × 42.4 4.250 × 1.660		46 1.81	172 6.77	89 3.50	87 3.43	64.5 2.54	1/2*65-2
100 × 40 4 × 1½	108.0 × 48.3 4.250 × 1.900		53 2.08	172 6.77	89 3.50	87 3.43	64.5 2.54	1/2*65-2
100 × 50 4 × 2	108.0 × 60.3 4.250 × 2.375		61 2.40	172 6.77	106.5 4.19	92 3.62	64.5 2.54	1/2*65-2
100 × 65 4 × 2½	108.0 × 76.1 4.250 × 3.000		81 3.18	172 6.77	106.5 4.19	96 3.78	64.5 2.54	1/2*65-2
100 × 80 4 × 3	108.0 × 88.9 4.250 × 3.500		86 3.38	172 6.77	106.5 4.19	100 3.94	64.5 2.54	1/2*65-2
100 × 25 4 × 1	114.3 × 33.7 4.500 × 1.315		38 1.50	182 7.16	73 2.87	89 3.66	70 2.76	1/2*65-2
100 × 32 4 × 1¼	114.3 × 42.4 4.500 × 1.660		46 1.81	182 7.16	82 3.22	90 3.74	70 2.76	1/2*65-2
100 × 40 4 × 1½	114.3 × 48.3 4.500 × 1.900		53 2.08	182 7.16	87 3.42	90 3.82	70 2.76	1/2*65-2
100 × 50 4 × 2	114.3 × 60.3 4.500 × 2.375		61 2.40	182 7.16	100 3.93	95 3.62	70 2.76	1/2*65-2
100 × 65 4 × 2½	114.3 × 73.0 4.500 × 2.875		81 3.18	182 7.16	118 4.64	94 4.02	70 2.76	1/2*65-2
100 × 65 4 × 2½	114.3 × 76.1 4.500 × 3.000		81 3.18	182 7.16	118 4.64	94 4.02	70 2.76	1/2*65-2
100 × 80 4 × 3	114.3 × 88.9 4.500 × 3.500		86 3.38	182 7.16	124 4.88	100 4.02	70 2.76	1/2*65-2
125 × 25 5 × 1	133.0 × 33.7 5.250 × 1.315		38 1.50	208 8.18	74 2.91	100 4.13	79 3.11	1/2*75-2
125 × 32 5 × 1¼	133.0 × 42.4 5.250 × 1.660		46 1.81	208 8.18	83 3.26	101 4.13	79 3.11	1/2*75-2
125 × 40 5 × 1½	133.0 × 48.3 5.250 × 1.900		53 2.08	208 8.18	88 3.46	101 4.13	79 3.11	1/2*75-2
125 × 50 5 × 2	133.0 × 60.3 5.250 × 2.375		61 2.40	208 8.18	102 4.01	105 4.33	79 3.11	1/2*75-2
125 × 65 5 × 2½	133.0 × 76.1 5.250 × 3.000		81 3.18	208 8.18	119 4.68	103 4.53	79 3.11	1/2*75-2
125 × 80 5 × 3	133.0 × 88.9 5.250 × 3.500		86 3.38	208 8.18	134 5.27	110 4.65	79 3.11	1/2*75-2



Mechanical Tee Threaded outlet

XGQT3S

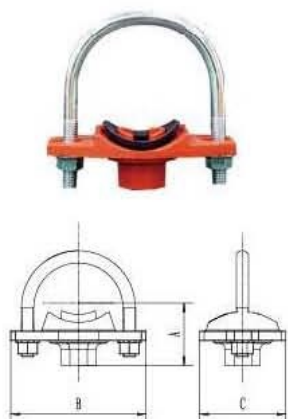


Nominal Size mm/in	Pipe OD. mm/in	Working Pressure psi/Mpa	Hole Dia. mm/in +1.6,0/+0.063,0	Dimensions mm/in				Bolt Size
				A	B	C	D	
125x25 5x1	139.7x33.7 5.500x1.315	300 psi 2.07 Mpa	38 1.50	215 8.46	74 2.91	103 4.33	83 3.26	1/2*75-2
125x32 5x1 1/4	139.7x42.4 5.500x1.660		46 1.81	215 8.46	83 3.26	104 4.41	83 3.26	1/2*75-2
125x40 5x1 1/2	139.7x48.3 5.500x1.900		53 2.08	215 8.46	88 3.46	104 4.41	83 3.26	1/2*75-2
125x50 5x2	139.7x60.3 5.500x2.375		61 2.40	215 8.46	102 4.01	108 4.53	83 3.26	1/2*75-2
125x65 5x2 1/2	139.7x76.1 5.500x3.000		81 3.18	215 8.46	119 4.68	108 4.53	83 3.26	1/2*75-2
125x80 5x3	139.7x88.9 5.500x3.500		86 3.38	215 8.46	134 5.27	113 4.72	83 3.26	1/2*75-2
125x25 5x1	141.3x33.7 5.563x1.315		38 1.50	215 8.46	74 2.91	103 4.33	84 3.31	1/2*75-2
125x32 5x1 1/4	141.3x42.4 5.563x1.660		46 1.81	215 8.46	83 3.26	104 4.41	84 3.31	1/2*75-2
125x40 5x1 1/2	141.3x48.3 5.563x1.900		53 2.00	215 8.46	88 3.46	104 4.41	84 3.31	1/2*75-2
125x50 5x2	141.3x60.3 5.563x2.375		61 2.40	215 8.46	102 4.01	108 4.53	83 3.26	1/2*75-2
125x65 5x2 1/2	141.3x76.1 5.563x3.000		81 3.18	215 8.46	119 4.64	108 4.53	83 3.26	1/2*75-2
125x80 5x3	141.3x88.9 5.563x3.500		86 3.38	215 8.46	134 5.27	114 4.72	83 3.26	1/2*75-2
150x25 6x1	159.0x33.7 6.250x1.315		38 1.50	244 9.60	78 3.07	116 4.57	94 3.70	9/16*75-2
150x32 6x1 1/4	159.0x42.4 6.250x1.660		46 1.81	244 9.60	93 3.66	118 4.65	94 3.70	9/16*75-2
150x40 6x1 1/2	159.0x48.3 6.250x1.900		53 2.08	244 9.60	93 3.66	118 4.65	94 3.70	9/16*75-2
150x50 6x2	159.0x60.3 6.250x2.375		61 2.40	230 9.05	98 3.85	115 4.53	90 3.54	9/16*75-2
150x65 6x2 1/2	159.0x76.1 6.250x3.000		81 3.18	230 9.05	121 4.76	125 4.92	90 3.54	9/16*75-2
150x80 6x3	159.0x88.9 6.250x3.500		86 3.38	230 9.05	134 5.27	125 4.92	90 3.54	9/16*75-2
150x100 6x4	159.0x114.3 6.250x4.500		114 4.48	230 9.05	155 6.10	130 5.12	90 3.54	9/16*75-2
150x25 6x1	165.1x33.7 6.500x1.315		38 1.50	240 9.44	74 2.91	117 4.65	96 3.77	9/16*75-2
150x32 6x1 1/4	165.1x42.4 6.500x1.660		46 1.81	240 9.44	83 3.26	118 4.65	97.5 3.84	9/16*75-2
150x40 6x1 1/2	165.1x48.3 6.500x1.900		53 2.08	240 9.44	88 3.46	118 4.65	97.5 3.84	9/16*75-2
150x50 6x2	165.1x60.3 6.500x2.375		61 2.40	240 9.44	102 4.01	120 5.43	96 3.77	9/16*75-2
150x65 6x2 1/2	165.1x76.1 6.500x3.000		81 3.18	240 9.44	119 4.68	121 5.43	96 3.77	9/16*75-2
150x80 6x3	165.1x88.9 6.500x3.500		86 3.38	240 9.44	134 5.27	126 5.43	96 3.77	9/16*75-2
150x100 6x4	165.1x114.3 6.500x4.500		114 4.48	240 9.44	158 6.22	132 5.32	96 3.77	9/16*75-2
150x25 6x1	168.3x33.7 6.625x1.315		38 1.50	244 9.60	74 2.91	119 5.12	97 3.81	9/16*75-2
150x32 6x1 1/4	168.3x42.4 6.625x1.660		46 1.81	244 9.60	83 3.26	120 5.12	98.5 3.88	9/16*75-2
150x40 6x1 1/2	168.3x48.3 6.625x1.900		53 2.08	244 9.60	88 3.46	120 4.80	98.5 3.88	9/16*75-2
150x50 6x2	168.3x60.3 6.625x2.375		61 2.40	244 9.60	102 4.01	122 5.20	97 3.81	9/16*75-2
150x65 6x2 1/2	168.3x73.0 6.625x2.875		81 3.18	244 9.60	119 4.68	123 5.20	97 3.81	9/16*75-2
150x65 6x2 1/2	168.3x76.1 6.625x3.000		81 3.18	244 9.60	119 4.68	123 5.20	97 3.81	9/16*75-2
150x80 6x3	168.3x88.9 6.625x3.500		86 3.38	244 9.60	134 5.27	128 5.51	97 3.81	9/16*75-2
150x100 6x4	168.3x114.3 6.625x4.500		114 4.48	244 9.60	158 6.22	134 5.51	97 3.81	9/16*75-2
200x25 8x1	219.1x33.7 8.625x1.315		38 1.50	308 12.12	74 2.91	145 5.91	124 4.88	5/8*95-2
200x32 8x1 1/4	219.1x42.4 8.625x1.660		46 1.81	308 12.12	83 3.26	146 5.91	124 4.88	5/8*95-2
200x40 8x1 1/2	219.1x48.3 8.625x1.900		53 2.08	308 12.12	88 3.46	146 5.91	124 4.88	5/8*95-2
200x50 8x2	219.1x60.3 8.625x2.375		61 2.40	308 12.12	102 4.01	149 6.30	124 4.88	5/8*95-2
200x65 8x2 1/2	219.1x76.1 8.625x3.000		81 3.18	308 12.12	119 4.68	149 6.24	124 4.88	5/8*95-2
200x80 8x3	219.1x88.9 8.625x3.500		86 3.38	308 12.12	134 5.27	154 6.30	124 4.88	5/8*95-2
200x100 8x4	219.1x114.3 8.625x4.500	114 4.48	308 12.12	158 6.22	159 6.30	124 4.88	5/8*95-2	

The measurements of products maybe changed for the technical reason without responsibility note, please feel free to contact technical Dept.



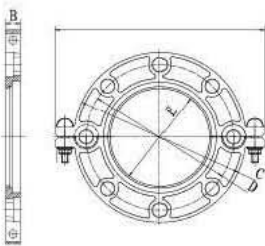
## U-Bolt Mechanical Tee XGQT3US



Nominal Size mm/in	Pipe OD. mm/in	Working Pressure psi/Mpa	Hole Dia. Mm/in +1.6,0/+0.063,0	Dimensions mm/in			Bolt Size
				A	B	C	
25×15 1×½	33.7×21.3 1.315×0.825	300 psi 2.07 Mpa	24 0.94	43 1.69	82 3.22	41 1.61	3/8×60-2
25×20 1×¾	33.7×26.9 1.315×1.050		24 0.94	45 1.77	82 3.22	41 1.61	3/8×60-2
32×15 1¼×½	42.4×21.3 1.660×0.825		30 1.18	47 1.85	88 3.46	52 2.04	3/8×76-2
32×20 1¼×¾	42.4×26.9 1.660×1.050		30 1.18	49 1.93	88 3.46	52 2.04	3/8×76-2
32×25 1¼×1	42.4×33.7 1.660×1.315		30 1.18	51 2.00	88 3.46	52 2.04	3/8×76-2
40×15 1½×½	48.3×21.3 1.900×0.825		30 1.18	50 1.96	88 3.46	52 2.04	3/8×76-2
40×20 1½×¾	48.3×26.9 1.900×1.050		30 1.18	52 2.04	88 3.46	52 2.04	3/8×76-2
40×25 1½×1	48.3×33.7 1.900×1.315		30 1.18	54 2.12	88 3.46	52 2.04	3/8×76-2
50×15 2×½	60.3×21.3 2.375×0.825		30 1.18	56 2.20	102 4.01	52 2.04	3/8×92-2
50×20 2×¾	60.3×26.9 2.375×1.050		30 1.18	58 2.28	102 4.01	52 2.04	3/8×92-2
50×25 2×1	60.3×33.7 2.375×1.315		38 1.50	60 2.36	102 4.01	61 2.40	3/8×92-2
65×15 2½×½	73.0×21.3 2.875×0.825		30 1.18	63 2.48	112 4.40	52 2.04	3/8×108-2
65×20 2½×¾	73.0×26.9 2.875×1.050		30 1.18	65 2.55	112 4.40	52 2.04	3/8×108-2
65×25 2½×1	73.0×33.7 2.875×1.315		38 1.50	67 2.63	112 4.40	61 2.40	3/8×108-2
65×15 2½×½	76.1×21.3 3.000×0.825		30 1.18	64 2.51	112 4.40	52 2.04	3/8×108-2
65×20 2½×¾	76.1×26.9 3.000×1.050		30 1.18	66 2.59	112 4.40	52 2.04	3/8×108-2
65×25 2½×1	76.1×33.7 3.000×1.315		38 1.50	68 2.67	112 4.40	61 2.40	3/8×108-2

## Grooved Flange ANSI Class 150

### Grooved Flange XGQT09

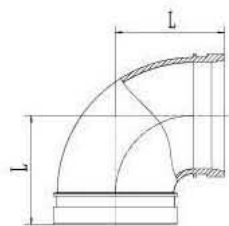


Nominal Size mm/in	Pipe OD. mm/in	Working Pressure psi/Mpa	Dimensions mm/in					Bolt/Size	
			A mm/in	B mm/in	C mm/in	D mm/in	E mm/in	No.-Size mm	
50 2	60.3 2.375	300 psi 2.07 Mpa	206 8.11	19 0.74	152 5.98	121 4.76	57.5 2.26	M10*50-2	5/8-4
65 2½	73 2.875		230 9.05	19 0.74	178 7.00	140 5.51	69.0 2.71	M10*50-2	5/8-4
80 3	88.9 3.5		244 9.60	19 0.74	191 7.52	152 5.98	85.0 3.34	M10*50-2	5/8-4
100 4	114.3 4.5		280 11.02	19 0.74	229 9.00	191 7.52	110.5 4.35	M12*55-2	5/8-8
125 5	141.3 5.563		322 12.67	22 0.86	250 9.84	216 8.50	137.0 5.39	M12*65-2	3/4-8
150 6	168.3 6.625		346 13.62	22 0.86	285 11.22	241.5 9.50	164.0 6.45	M12*65-2	3/4-8
200 8	219.1 8.625		410 16.14	24 0.94	340.0 13.38	298.5 11.75	214.0 8.42	3/8*70-2	3/4-8
250 10	273 10.75		478.0 18.81	25 0.98	405.6 15.97	362.0 14.25	268.0 10.55	3/8*70-2	7/8-12

## Grooved Flange PN 16

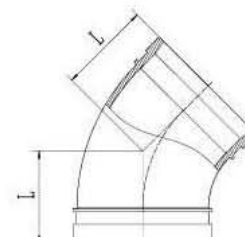
Nominal Size mm/in	Pipe OD. mm/in	Working Pressure psi/Mpa	Dimensions mm/in					Bolt/Size	
			A mm/in	B mm/in	C mm/in	D mm/in	E mm/in	No.-Size mm	
50 2	60.3 2.375	232psi 1.6Mpa	215 8.46	24 0.95	160 6.29	125 4.92	57.5 2.26	M10*50-2	4-M16
65 2½	73 2.875		240 9.44	24 0.95	176 6.92	145 5.71	69.8 2.74	M10*50-2	4-M16
65 2½	76.1 3		240 9.44	24 0.95	176 6.92	145 5.71	72.7 2.86	M10*50-2	4-M16
80 3	88.9 3.5		250 9.84	24 0.95	184 7.24	160 6.30	85.5 3.37	M10*50-2	8-M16
100 4	108 4.25		266 10.47	24 0.95	218 8.58	180 7.09	104.5 4.11	M12*55-2	8-M16
100 4	114.3 4.5		266 10.47	24 0.95	218 8.58	180 7.09	110.5 4.35	M12*55-2	8-M16
125 5	133 5.25		300 11.81	24 0.95	247 9.72	210 8.27	129.2 5.08	M12*65-2	8-M16
125 5	139.7 5.5		300 11.81	24 0.95	247 9.72	210 8.27	135.5 5.33	M12*65-2	8-M16
125 5	141.3 5.563		300 11.81	24 0.95	247 9.72	210 8.27	137.4 5.41	M12*65-2	8-M16
150 6	159 6.25		336 13.22	24 0.95	282 11.10	240 9.45	154.5 6.08	M12*65-2	8-M20
150 6	165.1 6.5		336 13.22	24 0.95	282 11.10	240 9.45	163.5 6.43	M12*65-2	8-M20
150 6	168.3 6.625		336 13.22	24 0.95	282 11.10	240 9.45	163.5 6.43	M12*65-2	8-M20
200 8	219.1 8.625		395 15.55	27 1.06	335 13.18	295 11.61	214.5 8.44	3/8*70-2	12-M20
250 10	273 10.75		470 18.50	27 1.06	404 15.90	355 13.97	267 10.51	3/8*70-2	12-M24

## 90° Elbow XGQT01



Nominal Size mm/in	Pipe OD. mm/in	Working Pressure psi/Mpa	Dimensions L mm/in
25	33.7	300 psi 2.07 Mpa	57
1	1.327		2.24
32	42.4		60
1¼	1.669		2.36
40	48.3		60
1½	1.9		2.36
50	60.3		70
2	2.375		2.75
65	73		76
2½	2.875		3.00
65	76.1		76
2½	3		3.00
80	88.9		86
3	3.5		3.38
100	108		101
4	4.25		3.98
100	114.3		101
4	4.5		3.98
125	133		121
5	5.25		4.76
125	139.7	121	
5	5.5	4.76	
125	141.3	121	
5	5.563	4.76	
150	159	140	
6	6.25	5.51	
150	165.1	140	
6	6.5	5.51	
150	168.3	140	
6	6.625	5.51	
200	219.1	175	
8	8.625	6.88	
250	273	188.5	
10	10.75	7.42	
300	323.9	222.5	
12	12.750	8.76	

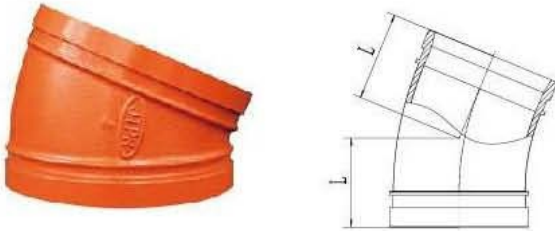
## 45° Elbow XGQT02



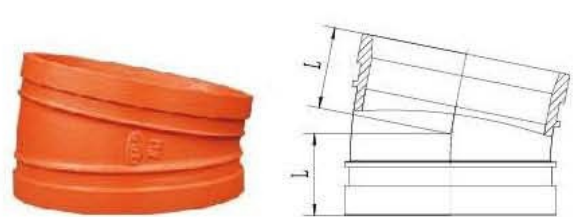
Nominal Size mm/in	Pipe OD. mm/in	Working Pressure psi/Mpa	Dimensions L mm/in
25	33.7	300 psi 2.07 Mpa	45
1	1.327		1.77
32	42.4		45
1¼	1.669		1.77
40	48.3		45
1½	1.9		1.77
50	60.3		51
2	2.375		2.00
65	73		57
2½	2.875		2.24
65	76.1		57
2½	3		2.24
80	88.9		64
3	3.5		2.51
100	108		76
4	4.25		3.00
100	114.3		76
4	4.5		3.00
125	133		82.5
5	5.25		3.24
125	139.7	82.5	
5	5.5	3.24	
125	141.3	82.5	
5	5.563	3.24	
150	159	89	
6	6.25	3.50	
150	165.1	89	
6	6.5	3.50	
150	168.3	89	
6	6.625	3.50	
200	219.1	108	
8	8.625	4.25	
250	273	120.5	
10	10.75	4.74	
300	323.9	133	
12	12.750	5.23	



## 22.5° Elbow XGQT021



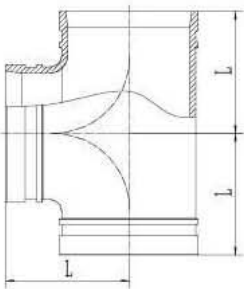
## 11.25° Elbow XGQT022



Nominal Size mm/in	Pipe OD. mm/in	Working Pressure psi/Mpa	Dimensions L mm/in
32	42.4	300 psi 2.07 Mpa	45
1¼	1.669		1.77
40	48.3		45
1½	1.9		1.77
50	60.3		48
2	2.375		1.88
65	73		51
2½	2.875		2.00
65	76.1		51
2½	3		2.00
80	88.9		57
3	3.5		2.24
100	108		73
4	4.25		2.87
100	114.3		73
4	4.5		2.87
125	133		73
5	5.25		2.87
125	139.7		73
5	5.5		2.87
150	159	89	
6	6.25	3.50	
150	165.1	89	
6	6.5	3.50	
150	168.3	89	
6	6.625	3.50	
200	219.1	98	
8	8.625	3.85	

Nominal Size mm/in	Pipe OD. mm/in	Working Pressure psi/Mpa	Dimensions L mm/in
50	60.3	300 psi 2.07 Mpa	35
2	2.375		1.37
65	76.1		38
2½	3		1.49
80	88.9		38
3	3.5		1.49
100	108		44
4	4.25		1.73
100	114.3		44
4	4.5		1.73
125	133		51
5	5.25		2.00
125	139.7		51
5	5.5		2.00
150	159		51
6	6.25		2.00
150	165.1		51
6	6.5		2.00
150	168.3		51
6	6.625		2.00
200	219.1	51	
8	8.625	2.00	

**Tee**  
**XGQT03**

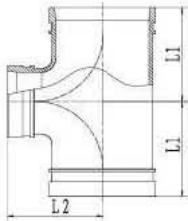


Nominal Size mm/in	Pipe OD. mm/in	Working Pressure psi/Mpa	Dimensions L mm/in
25 1	33.7 1.327	300 psi 2.07 Mpa	57 2.24
32 1¼	42.4 1.669		60 2.36
40 1½	48.3 1.9		60 2.36
50 2	60.3 2.375		70 2.75
65 2½	73 2.875		76 3.00
65 2½	76.1 3		76 3.00
80 3	88.9 3.5		86 3.38
100 4	108 4.25		101 3.98
100 4	114.3 4.5		101 3.98
125 5	133 5.25		121 4.76
125 5	139.7 5.5		121 4.76
125 5	141.3 5.563		121 4.76
150 6	159 6.25		140 5.51
150 6	165.1 6.5		140 5.51
150 6	168.3 6.625		140 5.51
200 8	219.1 8.625		175 6.88
250 10	273 10.75		215 8.46
300 12	323.9 12.750		245 9.64



Grooved Reducing Tee

XGQT04

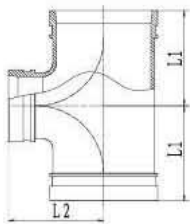


Nominal Size mm/in	Pipe OD. mm/in	Working Pressure psi/Mpa	Dimensions L1 mm/in	Dimensions L2 mm/in
50×25 2×1	60.3×33.7 2.375×1.315	300 psi 2.07 Mpa	70 2.75	70 2.75
50×32 2×1¼	60.3×42.4 2.375×1.660		70 2.75	70 2.75
50×40 2×1½	60.3×48.3 2.375×1.900		70 2.75	70 2.75
65×32 2½×1¼	73.0×42.4 2.875×1.660		76 3.00	76 3.00
65×40 2½×1½	73.0×48.3 2.875×1.900		76 3.00	76 3.00
65×50 2½×2	73.0×60.3 2.875×2.375		76 3.00	76 3.00
65×32 2½×1¼	76.1×42.4 3.000×1.660		76 3.00	76 3.00
65×40 2½×1½	76.1×48.3 3.000×1.900		76 3.00	76 3.00
65×50 2½×2	76.1×60.3 3.000×2.375		76 3.00	76 3.00
80×40 3×1½	88.9×48.3 3.500×1.900		86 3.38	86 3.38
80×50 3×2	88.9×60.3 3.500×2.375		86 3.38	86 3.38
80×65 3×2½	88.9×76.1 3.500×3.000		86 3.38	86 3.38
100×65 4×2½	108.0×76.1 4.250×3.000		101 3.98	101 3.98
100×80 4×3	108.0×88.9 4.250×3.500		101 3.98	101 3.98
100×50 4×2	114.3×60.3 4.500×2.375		101 3.98	101 3.98
100×65 4×2½	114.3×76.1 4.500×3.000		101 3.98	101 3.98
100×80 4×3	114.3×88.9 4.500×3.500		101 3.98	101 3.98
125×50 5×2	133.0×60.3 5.250×2.375		121 4.76	121 4.76
125×65 5×2½	133.0×76.1 5.250×3.000		121 4.76	121 4.76
125×100 5×4	133.0×108.0 5.250×4.250		121 4.76	121 4.76
125×100 5×4	133.0×114.3 5.250×4.500		121 4.76	121 4.76
125×50 5×2	139.7×60.3 5.500×2.375		121 4.76	121 4.76
125×65 5×2½	139.7×76.1 5.500×3.000		121 4.76	121 4.76
125×80 5×3	139.7×88.9 5.500×3.500		121 4.76	121 4.76
125×100 5×4	139.7×114.3 5.500×4.500		121 4.76	121 4.76
125×50 5×2	141.3×60.3 5.563×2.375		121 4.76	121 4.76
125×65 5×2½	141.3×73.0 5.563×2.875		121 4.76	121 4.76

The measurements of products maybe changed for the technical reason without responsibility note,please feel free to contact technical Dept.

## Grooved Reducing Tee

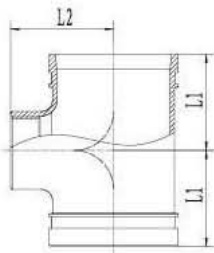
### XGQT04



Nominal Size mm/in	Pipe OD. mm/in	Working Pressure psi/Mpa	Dimensions L1 mm/in	Dimensions L2 mm/in
125×65 5×2½	141.3×76.1 5.563×3.000	300 psi 2.07 Mpa	121 4.76	121 4.76
125×80 5×3	141.3×88.9 5.563×3.500		121 4.76	121 4.76
125×100 5×4	141.3×114.3 5.563×4.500		121 4.76	121 4.76
150×65 6×2½	159.0×76.1 6.250×3.000		140 5.50	140 5.50
150×80 6×3	159.0×88.9 6.250×3.500		140 5.50	140 5.50
150×100 6×4	159.0×108.0 6.250×4.250		140 5.50	140 5.50
150×100 6×4	159.0×114.3 6.250×4.500		140 5.50	140 5.50
150×50 6×2	165.1×60.3 6.500×2.375		140 5.50	140 5.50
150×65 6×2½	165.1×76.1 6.500×3.000		140 5.50	140 5.50
150×80 6×3	165.1×88.9 6.500×3.500		140 5.50	140 5.50
150×100 6×4	165.1×114.3 6.500×4.500		140 5.50	140 5.50
150×125 6×5	165.1×139.7 6.500×5.500		140 5.50	140 5.50
150×50 6×2	168.3×60.3 6.625×2.375		140 5.50	140 5.50
150×65 6×2½	168.3×76.1 6.625×3.000		140 5.50	140 5.50
150×80 6×3	168.3×88.9 6.625×3.500		140 5.50	140 5.50
200×65 8×2½	219.1×76.1 8.625×3.000		175 6.88	175 6.88
200×80 8×3	219.1×88.9 8.625×3.500		175 6.88	175 6.88
200×100 8×4	219.1×108.0 8.625×4.250		175 6.88	175 6.88
200×100 8×4	219.1×114.3 8.625×4.500		175 6.88	175 6.88
200×125 8×5	219.1×139.7 8.625×5.500		175 6.88	175 6.88
200×150 8×6	219.1×159.0 8.625×6.250		175 6.88	175 6.88
200×150 8×6	219.1×165.1 8.625×6.500		175 6.88	175 6.88
200×150 8×6	219.1×168.3 8.625×6.625		175 6.88	175 6.88
250×100 10×4	273.0×114.3 10.750×4.500		215 8.46	215 8.46
250×125 10×5	273.0×139.7 10.750×5.500		215 8.46	215 8.46
250×150 10×6	273.0×165.1 10.750×6.500		215 8.46	215 8.46

Threaded Reducing Tee

**XGQT04S**

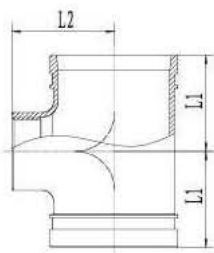


Nominal Size mm/in	Pipe OD. mm/in	Working Pressure psi/Mpa	Dimensions L1 mm/in	Dimensions L2 mm/in
40×25 1½×1	48.3×33.7 1.900×1.315	300 psi 2.07 Mpa	60 2.36	60 2.36
40×32 1½×1¼	48.3×42.4 1.900×1.660		60 2.36	60 2.36
50×25 2×1	60.3×33.7 2.375×1.315		70 2.75	70 2.75
50×32 2×1¼	60.3×42.4 2.375×1.660		70 2.75	70 2.75
50×40 2×1½	60.3×48.3 2.375×1.900		70 2.75	70 2.75
65×25 2½×1	73.0×33.7 2.875×1.315		76 3.00	76 3.00
65×32 2½×1¼	73.0×42.4 2.875×1.660		76 3.00	76 3.00
65×40 2½×1½	73.0×48.3 2.875×1.900		76 3.00	76 3.00
65×50 2½×2	73.0×60.3 2.875×2.375		76 3.00	76 3.00
65×25 2½×1	76.1×33.7 3.000×1.315		76 3.00	76 3.00
65×32 2½×1¼	76.1×42.4 3.000×1.660		76 3.00	76 3.00
65×40 2½×1½	76.1×48.3 3.000×1.900		76 3.00	76 3.00
65×50 2½×2	76.1×60.3 3.000×2.375		76 3.00	76 3.00
80×25 3×1	88.9×33.7 3.500×1.315		86 3.38	86 3.38
80×32 3×1¼	88.9×42.4 3.500×1.660		86 3.38	86 3.38
80×40 3×1½	88.9×48.3 3.500×1.900		86 3.38	86 3.38
80×50 3×2	88.9×60.3 3.500×2.375		86 3.38	86 3.38
80×65 3×2½	88.9×76.1 3.500×3.000		86 3.38	86 3.38
100×65 4×2½	108.0×76.1 4.250×3.000		101 3.98	101 3.98
100×80 4×3	108.0×88.9 4.250×3.500		101 3.98	101 3.98
100×25 4×1	114.3×33.7 4.500×1.315		101 3.98	101 3.98
100×32 4×1¼	114.3×42.4 4.500×1.660		101 3.98	101 3.98
100×40 4×1½	114.3×48.3 4.500×1.900		101 3.98	101 3.98
100×50 4×2	114.3×60.3 4.500×2.375		101 3.98	101 3.98
100×65 4×2½	114.3×76.1 4.500×3.000		101 3.98	101 3.98
100×80 4×3	114.3×88.9 4.500×3.500		101 3.98	101 3.98
125×25 5×1	139.7×33.7 5.500×1.315		121 4.76	121 4.76



### Threaded Reducing Tee

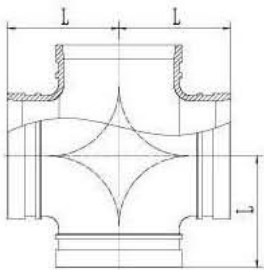
## XGQT04S



Nominal Size mm/in	Pipe OD. mm/in	Working Pressure psi/Mpa	Dimensions L1 mm/in	Dimensions L2 mm/in
125×32 5×1¼	139.7×42.4 5.500×1.660	300 psi 2.07 Mpa	121 4.76	121 4.76
125×40 5×1½	139.7×48.3 5.500×1.900		121 4.76	121 4.76
125×50 5×2	139.7×60.3 5.500×2.375		121 4.76	121 4.76
125×65 5×2½	139.7×76.1 5.500×3.000		121 4.76	121 4.76
125×80 5×3	139.7×88.9 5.500×3.500		121 4.76	121 4.76
125×25 5×1	141.3×33.7 5.563×1.315		121 4.76	121 4.76
125×32 5×1¼	141.3×42.4 5.563×1.660		121 4.76	121 4.76
125×40 5×1½	141.3×48.3 5.563×1.900		121 4.76	121 4.76
125×50 5×2	141.3×60.3 5.563×2.375		121 4.76	121 4.76
125×65 5×2½	141.3×73.0 5.563×2.875		121 4.76	121 4.76
125×65 5×2½	141.3×76.1 5.563×3.000		121 4.76	121 4.76
150×65 6×2½	159.0×76.1 6.250×3.000		140 5.50	140 5.50
150×80 6×3	159.0×88.9 6.250×3.500		140 5.50	140 5.50
150×25 6×1	165.1×33.7 6.500×1.315		140 5.50	140 5.50
150×32 6×1¼	165.1×42.4 6.500×1.660		140 5.50	140 5.50
150×40 6×1½	165.1×48.3 6.500×1.900		140 5.50	140 5.50
150×50 6×2	165.1×60.3 6.500×2.375		140 5.50	140 5.50
150×65 6×2½	165.1×76.1 6.500×3.000		140 5.50	140 5.50
150×80 6×3	165.1×88.9 6.500×3.500		140 5.50	140 5.50
150×100 6×4	165.1×114.3 6.500×4.500		140 5.50	140 5.50
150×25 6×1	168.3×33.7 6.625×1.315		140 5.50	140 5.50
150×32 6×1¼	168.3×42.4 6.625×1.660		140 5.50	140 5.50
150×40 6×1½	168.3×48.3 6.625×1.900		140 5.50	140 5.50
150×50 6×2	168.3×60.3 6.625×2.375		140 5.50	140 5.50
200×50 8×2	219.1×60.3 8.625×2.375		175 6.88	175 6.88
200×65 8×2½	219.1×76.1 8.625×3.000		175 6.88	175 6.88
200×80 8×3	219.1×88.9 8.625×3.500		175 6.88	175 6.88



Cross  
XGQT05

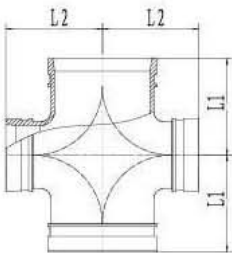


Nominal Size mm/in	Pipe OD. mm/in	Working Pressure psi/Mpa	Dimensions L mm/in
32 1¼	42.4 1.669	300 psi 2.07 Mpa	60 2.36
40 1½	48.3 1.9		60 2.36
50 2	60.3 2.375		70 2.75
65 2½	73.0 2.875		76 3.00
65 2½	76.1 3		76 3.00
80 3	88.9 3.5		86 3.38
100 4	108 4.25		101 3.98
100 4	114.3 4.5		101 3.98
125 5	133.0 5.25		121 4.76
125 5	139.7 5.5		121 4.76
125 5	141.3 5.563		121 4.76
150 6	159.0 6.25		140 5.51
150 6	165.1 6.5		140 5.51
150 6	168.3 6.625		140 5.51
200 8	219.1 8.625		175 6.88
250 10	273.0 10.75		215 8.46
300 12	323.9 12.750	245 9.64	

The measurements of products maybe changed for the technical reason without responsibility note,please feel free to contact technical Dept.

Grooved Reducing Cross

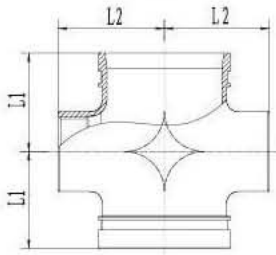
**XGQT051**



Nominal Size mm/in	Pipe OD. mm/in	Working Pressure psi/Mpa	Dimensions L1 mm/in	Dimensions L2 mm/in
100×50 4×2	114.3×60.3 4.500×2.375	300 psi 2.07 Mpa	101 3.98	101 3.98
100×65 4×2½	114.3×76.1 4.500×3.000		101 3.98	101 3.98
100×80 4×3	114.3×88.9 5.563×3.500		101 3.98	101 3.98
125×100 5×4	139.7×114.3 5.500×4.500		121 4.76	121 4.76
150×100 6×4	165.1×114.3 6.500×4.500		140 5.50	140 5.50
150×50 6×2	168.3×60.3 6.625×2.375		140 5.50	140 5.50
150×65 6×2½	168.3×76.1 6.625×3.000		140 5.50	140 5.50
150×80 6×3	168.3×88.9 6.625×3.500		140 5.50	140 5.50
150×100 6×4	168.3×114.3 6.625×4.500		140 5.50	140 5.50

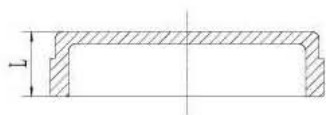
Threaded Reducing Cross

**XGQT051S**



Nominal Size mm/in	Pipe OD. mm/in	Working Pressure psi/Mpa	Dimensions L1 mm/in	Dimensions L2 mm/in
100×25 4×1	114.3×33.7 4.500×1.315	300 psi 2.07 Mpa	101 3.98	101 3.98
100×32 4×1¼	114.3×42.4 4.500×1.660		101 3.98	101 3.98
100×40 4×1½	114.3×48.3 4.500×1.900		101 3.98	101 3.98
100×50 4×2	114.3×60.3 4.500×2.375		101 3.98	101 3.98
100×65 4×2½	114.3×76.1 4.500×3.000		101 3.98	101 3.98
100×80 4×3	114.3×88.9 4.500×3.500		101 3.98	101 3.98
125×32 5×1¼	139.7×42.4 5.500×1.660		121 4.76	121 4.76
125×40 5×1½	139.7×48.3 5.500×1.900		121 4.76	121 4.76
125×50 5×2	139.7×60.3 5.500×2.375		121 4.76	121 4.76
125×65 5×2½	139.7×76.1 5.500×3.000		121 4.76	121 4.76
125×80 5×3	139.7×88.9 5.500×3.500		121 4.76	121 4.76
150×25 6×1	165.1×33.7 6.500×1.315		140 5.50	140 5.50
150×32 6×1¼	165.1×42.4 6.500×1.660		140 5.50	140 5.50
150×40 6×1½	165.1×48.3 6.500×1.900		140 5.50	140 5.50
150×50 6×2	165.1×60.3 6.500×2.375		140 5.50	140 5.50
150×65 6×2½	165.1×76.1 6.500×3.000		140 5.50	140 5.50
150×80 6×3	165.1×88.9 6.500×3.500	140 5.50	140 5.50	

Cap  
XGQT06

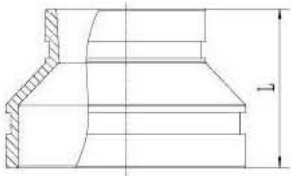


Nominal Size mm/in	Pipe OD. mm/in	Working Pressure psi/Mpa	Dimensions L mm/in
25 1	33.7 1.327	300 psi 2.07 Mpa	25 0.98
32 1¼	42.4 1.669		25 0.98
40 1½	48.3 1.9		25 0.98
50 2	60.3 2.375		25 0.98
65 2½	73 2.875		25 0.98
65 2½	76.1 3		25 0.98
80 3	88.9 3.5		26 10.2
100 4	108 4.25		26 10.2
100 4	114.3 4.5		26 10.2
125 5	133 5.25		26 10.2
125 5	139.7 5.5		26 10.2
125 5	141.3 5.563		26 10.2
150 6	159 6.25		26 10.2
150 6	165.1 6.5		26 10.2
150 6	168.3 6.625		26 10.2
200 8	219.1 8.625		30 1.18
250 10	273 10.75		32 1.25
300 12	323.9 12.750		32 1.25



Grooved Concentric Reducer

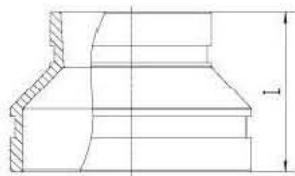
XGQT07



Nominal Size mm/in	Pipe OD. mm/in	Working Pressure psi/Mpa	Dimensions L mm/in
32×25 1¼×1	42.4×33.7 1.660×1.315	300 psi 2.07 Mpa	64 2.51
40×25 1½×1	48.3×33.7 1.900×1.315		64 2.51
40×32 1½×1¼	48.3×42.4 1.900×1.660		64 2.51
50×25 2×1	60.3×33.7 2.375×1.315		64 2.51
50×32 2×1¼	60.3×42.4 2.375×1.660		64 2.51
50×40 2×1½	60.3×48.3 2.375×1.900		64 2.51
65×25 2½×1	73.0×33.7 2.875×1.315		64 2.51
65×32 2½×1¼	73.0×42.4 2.875×1.660		64 2.51
65×40 2½×1½	73.0×48.3 2.875×1.900		64 2.51
65×50 2½×2	73.0×60.3 2.875×2.375		64 2.51
65×32 2½×1¼	76.1×42.4 3.000×1.660		64 2.51
65×40 2½×1½	76.1×48.3 3.000×1.900		64 2.51
65×50 2½×2	76.1×60.3 3.000×2.375		64 2.51
80×32 3×1¼	88.9×42.4 3.500×1.660		64 2.51
80×40 3×1½	88.9×48.3 3.500×1.900		64 2.51
80×50 3×2	88.9×60.3 3.500×2.375		64 2.51
80×65 3×2½	88.9×76.1 3.500×3.000		64 2.51
100×65 4×2½	108.0×76.1 4.250×3.000		76 2.99
100×80 4×3	108.0×88.9 4.250×3.500		76 2.99
100×32 4×1¼	114.3×42.4 4.500×1.660		76 2.99

### Grooved Concentric Reducer

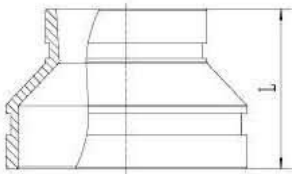
## XGQT07



Nominal Size mm/in	Pipe OD. mm/in	Working Pressure psi/Mpa	Dimensions L mm/in
100×40 4×1½	114.3×48.3 4.500×1.900	300 psi 2.07 Mpa	76 2.99
100×50 4×2	114.3×60.3 4.500×2.375		76 2.99
100×65 4×2½	114.3×76.1 4.500×3.000		76 2.99
100×80 4×3	114.3×88.9 4.500×3.500		76 2.99
125×50 5×2	139.7×60.3 5.500×2.375		89 3.50
125×65 5×2½	139.7×76.1 5.500×3.000		89 3.50
125×80 5×3	139.7×88.9 5.500×3.500		89 3.50
125×100 5×4	139.7×114.3 5.500×4.500		89 3.50
125×50 5×2	141.3×60.3 5.563×2.375		89 3.50
125×65 5×2½	141.3×76.1 5.563×3.000		89 3.50
125×80 5×3	141.3×88.9 5.563×3.500		89 3.50
125×100 5×4	141.3×114.3 5.563×4.500		89 3.50
150×50 6×2	159.0×60.3 6.250×2.375		102 4.01
150×65 6×2½	159.0×76.1 6.250×3.000		102 4.01
150×80 6×3	159.0×88.9 6.250×3.500		102 4.01
150×100 6×4	159.0×108.0 6.250×4.250		102 4.01
150×100 6×4	159.0×114.3 6.250×4.500		102 4.01
150×125 6×5	159.0×133.0 6.250×5.250		102 4.01
150×125 6×5	159.0×139.7 6.250×5.500		102 4.01
150×50 6×2	165.1×60.3 6.500×2.375		102 4.01

Grooved Concentric Reducer

XGQT07

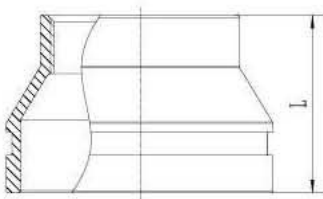


Nominal Size mm/in	Pipe OD. mm/in	Working Pressure psi/Mpa	Dimensions L mm/in
150×65 6×2½	165.1×76.1 6.500×3.000	300 psi 2.07 Mpa	102 4.01
150×80 6×3	165.1×88.9 6.500×3.500		102 4.01
150×100 6×4	165.1×114.3 6.500×4.500		102 4.01
150×125 6×5	165.1×139.7 6.500×5.500		102 4.01
150×50 6×2	168.3×60.3 6.625×2.375		102 4.01
150×65 6×2½	168.3×76.1 6.625×3.000		102 4.01
150×80 6×3	168.3×88.9 6.625×3.500		102 4.01
150×100 6×4	168.3× 114.3 6.625×4.500		102 4.01
150×80 6×5	168.3×139.7 6.625×5.500		102 4.01
200×50 8×2	219.1×60.3 8.625×2.375		127 5
200×65 8×2½	219.1×76.1 8.625×3.000		127 5
200×80 8×3	219.1×88.9 8.625×3.500		127 5
200×100 8×4	219.1×108.0 8.625×4.250		127 5
200×100 8×4	219.1×114.3 8.625×4.500		127 5
200×125 8×5	219.1×139.7 8.625×5.500		127 5
200×150 8×6	219.1×159.0 8.625×6.250		127 5
200×150 8×6	219.1×165.1 8.625×6.500		127 5
200×150 8×6	219.1×168.3 8.625×6.625		127 5



### Threaded Concentric Reducer

## XGQT07S

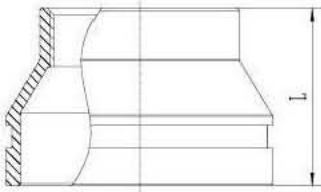


Nominal Size mm/in	Pipe OD. mm/in	Working Pressure psi/Mpa	Dimensions L mm/in
32×25 1¼×1	42.4×33.7 1.660×1.315	300 psi 2.07 Mpa	64 2.51
40×32 1½×1¼	48.3×42.4 1.900×1.660		64 2.51
50×25 2×1	60.3×33.7 2.375×1.315		64 2.51
50×32 2×1¼	60.3×42.4 2.375×1.660		64 2.51
50×40 2×1½	60.3×48.3 2.375×1.900		64 2.51
65×25 2½×1	73.0×33.7 2.875×1.315		64 2.51
65×32 2½×1¼	73.0×42.4 2.875×1.660		64 2.51
65×40 2½×1½	73.0×48.3 2.875×1.900		64 2.51
65×50 2½×2	73.0×60.3 2.875×2.375		64 2.51
65×25 2½×1	76.1×33.7 3.000×1.315		64 2.51
65×32 2½×1¼	76.1×42.4 3.000×1.660		64 2.51
65×40 2½×1½	76.1×48.3 3.000×1.900		64 2.51
65×50 2½×2	76.1×60.3 3.000×2.375		64 2.51
80×25 3×1	88.9×33.7 3.500×1.315		64 2.51
80×32 3×1¼	88.9×42.4 3.500×1.660		64 2.51
80×40 3×1½	88.9×48.3 3.500×1.900		64 2.51
80×50 3×2	88.9×60.3 3.500×2.375		64 2.51
80×65 3×2½	88.9×76.1 3.500×3.000		64 2.51
100×25 4×1	108.0×33.7 4.250×1.315		76 2.99
100×32 4×1¼	108.0×42.4 4.250×1.660		76 2.99
100×40 4×1½	108.0×48.3 4.250×1.900		76 2.99
100×50 4×2	108.0×60.3 4.250×2.375		76 2.99
100×65 4×2½	108.0×76.1 4.250×3.000		76 2.99
100×80 4×3	108.0×88.9 4.250×3.500		76 2.99



Threaded Concentric Reducer

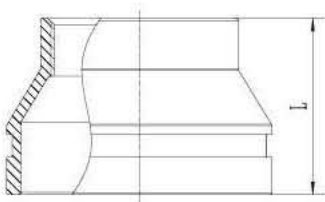
XGQT07S



Nominal Size mm/in	Pipe OD. mm/in	Working Pressure psi/Mpa	Dimensions L mm/in
100×25 4×1	114.3×33.7 4.500×1.315	300 psi 2.07 Mpa	76 2.99
100×32 4×1¼	114.3×42.4 4.500×1.660		76 2.99
100×40 4×1½	114.3×48.3 4.500×1.900		76 2.99
100×50 4×2	114.3×60.3 4.500×2.375		76 2.99
100×65 4×2½	114.3×76.1 4.500×3.000		76 2.99
100×80 4×3	114.3×88.9 4.500×3.500		76 2.99
125×25 5×1	133.0×33.7 5.250×1.315		89 3.50
125×32 5×1¼	133.0×42.4 5.250×1.660		89 3.50
125×40 5×1½	133.0×48.3 5.250×1.900		89 3.50
125×50 5×2	133.0×60.3 5.250×2.375		89 3.50
125×25 5×1	139.7×33.7 5.500×1.315		89 3.50
125×32 5×1¼	139.7×42.4 5.500×1.660		89 3.50
125×40 5×1½	139.7×48.3 5.500×1.900		89 3.50
125×50 5×2	139.7×60.3 5.500×2.375		89 3.50
125×65 5×2½	139.7×76.1 5.500×3.000		89 3.50
125×80 5×3	139.7×88.9 5.500×3.500		89 3.50
125×100 5×4	139.7×114.3 5.500×4.500		89 3.50
125×25 5×1	141.3×33.7 5.563×1.315		89 3.50
125×32 5×1¼	141.3×42.4 5.563×1.660		89 3.50
125×40 5×1½	141.3×48.3 5.563×1.900		89 3.50
125×50 5×2	141.3×60.3 5.563×2.375		89 3.50
125×65 5×2½	141.3×76.1 5.563×3.000		89 3.50
125×80 5×3	141.3×88.9 5.563×3.500		89 3.50
150×25 6×1	159.0×33.7 6.250×1.315		102 4.01

Threaded Concentric Reducer

**XGQT07S**

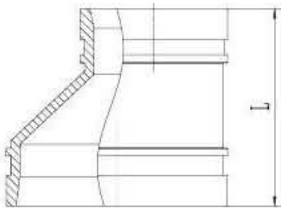


Nominal Size mm/in	Pipe OD. mm/in	Working Pressure psi/Mpa	Dimensions L mm/in
150×32 6×1¼	159.0×42.4 6.250×1.660	300 psi 2.07 Mpa	102 4.01
150×40 6×1½	159.0×48.3 6.250×1.900		102 4.01
150×50 6×2	159.0×60.3 6.250×2.375		102 4.01
150×65 6×2½	159.0×76.1 6.250×3.000		102 4.01
150×80 6×3	159.0×88.9 6.250×3.500		102 4.01
150×25 6×1	165.1×33.7 6.500×1.315		102 4.01
150×32 6×1¼	165.1×42 6.500×1.660		102 4.01
150×40 6×1½	165.1×48.3 6.500×1.900		102 4.01
150×50 6×2	165.1×60.3 6.500×2.375		102 4.01
150×65 6×2½	165.1×76.1 6.500×3.000		102 4.01
150×80 6×3	165.1×88.9 6.500×3.500		102 4.01
150×100 6×4	165.1×114.3 6.500×4.500		102 4.01
150×25 6×1	168.3×33.7 6.625×1.315		102 4.01
150×32 6×1¼	168.3×42.4 6.625×1.660		102 4.01
150×40 6×1½	168.3×48.3 6.625×1.900		102 4.01
150×50 6×2	168.3×60.3 6.625×2.375		102 4.01
200×25 8×1	219.1×33.7 8.625×1.315		127 5
200×32 8×1¼	219.1×42.4 8.625×1.660		127 5
200×40 8×1½	219.1×48.3 8.625×1.900		127 5
200×50 8×2	219.1×60.3 8.625×2.375		127 5
200×65 8×2½	219.1×76.1 8.625×3.000		127 5
200×80 8×3	219.1×88.9 8.625×3.500		127 5
200×100 8×4	219.1×114.3 8.625×4.500		127 5



Grooved Eccentric Reducer

XGQT07P

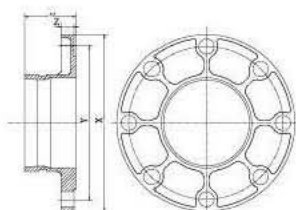


Nominal Size mm/in	Pipe OD. mm/in	Working Pressure psi/Mpa	Dimensions L mm/in
80×50 3×2	88.9×60.3 3.500×2.375	300 psi 2.07 Mpa	89 3.50
100×65 4×2½	108.0×76.1 4.250×3.000		102 4.01
100×80 4×3	108.0×88.9 4.250×3.500		102 4.01
100×50 4×2	114.3×60.3 4.500×2.375		102 4.01
100×65 4×2½	114.3×76.1 4.500×3.000		102 4.01
100×80 4×3	114.3×88.9 4.500×3.500		102 4.01
125×80 5×3	139.7×88.9 5.500×3.500		102 4.01
125×100 5×4	139.7×114.3 5.500×4.500		102 4.01
150×80 6×3	159.0×88.9 6.250×3.500		102 4.01
150×100 6×4	159.0×108.0 6.250×4.250		102 4.01
150×100 6×4	159.0×114.3 6.250×4.500		102 4.01
150×65 6×2½	165.1×76.1 6.500×3.000		102 4.01
150×80 6×3	165.1×88.9 6.500×3.500		102 4.01
150×100 6×4	165.1×114.3 6.500×4.500		102 4.01
150×125 6×5	165.1×139.7 6.500×5.500		102 4.01
150×80 6×3	168.3×88.9 6.625×3.500		102 4.01
150×100 6×4	168.3× 114.3 6.625×4.500		102 4.01
150×80 6×5	168.3×139.7 6.625×5.500		102 4.01
200×80 8×3	219.1×88.9 8.625×3.500		127 5
200×100 8×4	219.1×114.3 8.625×4.500		127 5
200×125 8×5	219.1×139.7 8.625×5.500		127 5
200×150 8×6	219.1×165.1 8.625×6.500		127 5
200×150 8×6	219.1×168.3 8.625×6.625		127 5

The measurements of products maybe changed for the technical reason without responsibility note,please feel free to contact technical Dept.

### Adaptor Flange ANSI Class 150

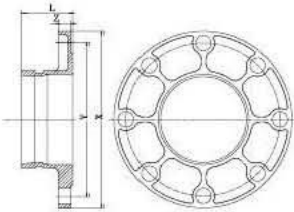
#### XGQT08



Nominal Size mm/in	Pipe OD. mm/in	Working Pressure psi/Mpa	Dimensions mm/in				Bolt/Size
			L mm/in	X mm/in	Y mm/in	Z mm/in	No.-Size mm
50 2	60.3 2.375	300 psi 2.07 Mpa	60 2.362	160 6.30	120.7 4.75	15 0.59	4-5/8
65 2½	73 2.875		60 2.362	180 7.08	139.7 5.50	15 0.59	4-5/8
80 3	88.9 3.5		65 2.559	200 7.87	152.5 6.00	15 0.59	8-5/8
100 4	114.3 4.5		70 2.756	228 8.97	190.5 7.50	16 0.63	8-5/8
100 4	141 4.5		70 2.756	250 9.84	216 8.50	17 0.67	8-5/8
150 6	168.3 6.625		70 2.756	282 11.10	241.5 9.50	17 0.67	8-3/4
200 8	219.1 8.625		75 2.952	340 13.39	298.5 11.75	19 0.74	8-3/4
250 10	273 10.75		85 3.346	405 15.94	362 14.25	21 0.82	12-7/8
300 12	323.9 12.750		85 3.346	482 18.97	432 17.00	22 0.86	12-7/8

## Adaptor Flange PN 16

### XGQT08



Nominal Size mm/in	Pipe OD. mm/in	Working Pressure psi/Mpa	Dimensions mm/in				Bolt Size No.-Size mm
			L mm/in	X mm/in	Y mm/in	Z mm/in	
50 2	60.3 2.375	232psi 1.6Mpa	65 2.559	165 6.50	125 4.92	16 0.63	4-M 16
65 2½	76.1 3		65 2.559	185 7.28	145 5.70	16 0.63	4-M 16
80 3	88.9 3.5		65 2.559	200 7.87	160 6.29	16 0.63	8-M 16
100 4	108 4.25		70 2.756	220 8.66	180 7.08	16 0.63	8-M 16
100 4	114.3 4.5		70 2.756	220 8.66	180 7.08	16 0.63	8-M 16
125 5	133 5.25		70 2.756	250 9.84	210 8.26	18 0.71	8-M 16
125 5	139.7 5.5		70 2.756	250 9.84	210 8.26	18 0.71	8-M 16
150 6	159 6.25		70 2.756	282 11.10	240 9.44	18 0.71	8-M 20
150 6	165.1 6.5		70 2.756	282 11.10	240 9.44	18 0.71	8-M 20
150 6	168.3 6.625		70 2.756	282 11.10	240 9.44	18 0.71	8-M 20
200 8	219.1 8.625		80 3.150	340 13.39	295 11.61	19 0.74	12-M 20
250 10	273 10.75		85 3.346	405 15.94	355 13.97	21 0.82	12-M 24
300 12	323.9 12.750		90 3.543	460 18.11	410 16.14	24 0.94	12-M 24

## GASKET DATA



Gasket	Name	Temperature Range	General Service Recommendations	Color Mark
E	EPDM	-34~+110°C ( -30~+230°F )	Recommended for hot water service within the specified temperature range plus a variety of dilute acids, oil-free air and many chemical services. UL classified in accordance with ANSI/NSF 61or cold+86° F ( +30° ) and hot +180° F ( +82° C ) potable water service. Not recommended for petroleum service	Green Strip
S	SILICON	-40~+177°C ( -40~+350°F )	( Recommended for high temperature dry air and some high temperature chemical products,drinking water,etc.)	White
D	NITRILE	-29~+82°C ( -20~+180°F )	Recommended for petroleum products, air with oil vapors, vegetable and mineral oils within the specified temperature range. Not recommended for hot water services.	Orange Strip



## Flexible Coupling



Nom. Size	Pipe O.D	Pipe Sched	Wall Thick	Max. Work Press	Max. End Load
DN/in	mm	(Sch)	mm	Bar/Psi	kN/Lbs
25	33.7	40	3.38	20/300	3.0/680
		10	2.77	20/300	3.0/680
32	42.4	40	3.56	20/300	4.8/1080
		10	2.77	20/300	4.8/1080
40	48.3	40	3.68	20/300	6.3/1420
		10	2.77	20/300	6.3/1420
50	60.3	40	3.91	20/300	9.8/2210
		10	2.77	20/300	9.8/2210
65	73	40	5.16	20/300	14.4/3240
		10	3.05	20/300	14.4/3240
65	76.1	--	6.35		
		--	5.08	20/300	15.7/3530
		--	3.81	20/300	15.7/3530
80	88.9	40	5.49	20/300	21.4/4800
		10	3.05	20/300	21.4/4800
100	114.3	40	6.02	20/300	35.4/7950
		10	3.05	20/300	35.4/7950
125	141.3	40	6.55	20/300	48.6/10930
		10	3.4	20/300	48.6/10930
150	165.1	--	6.35	20/300	66.4/14930
		--	5.08	20/300	66.4/14930
150	168.3	40	7.11	20/300	68.9/15500
		10	3.4	20/300	68.9/15500
200	219.1	40	8.18	20/300	116.9/26280
		30	7.04	20/300	116.9/26280
		10	4.77	20/300	77.8/17500
250	273	40	9.27	20/300	121.0/27210
		30	7.8	20/300	121.0/27210
		10	4.77	20/300	121.0/27210
300	323.9	40	10.31	20/300	170.3/38280
		STD	9.53	20/300	170.3/38280
		30	6.35	20/300	170.3/38280
		10	4.77	20/300	170.3/38280



## Installation Instruction For Rigid & Flexible Coupling

1. Rigid Couplings can not enable the connection system to be flexible, and the couplings are integrated with steel pipes after they are fastened. If the sling has a bigger span, the pipes will support the connection depending on their own rigidity.

2. Flexible Couplings can enable the connection system to be flexible ,it allows the steel pipe has a certain angle deviation and relative deviation .There are some clearance between the ends of two steel pipes in order to suit the expansion and shrinkage of the pipelines. The pipe couplings should maintain the normal working condition under the maximum allowable deflexion and dislocation .Flexible Couplings can endure a certain terminal load, which refers to the load along the pipe axis to be borne by coupling grooves.



1. Before installation, whether the groove meet the standard should be checked and then wipe away the pickles, iron rust, greasy dirt on gasket ring and pipe.



2. Spread lubricant on the pipe end and gasket ring.



3. Cover the compacting gasket ring at the sealing of a steel pipe.



4. Secure another grooved steel pipe to this one and cover the gasket ring on pipe end, making sure the gasket ring at the sealing position of both pipes.



5. Make sure coupling has fixed the pipes.



6. Gradually tighten nuts to torque.

## Installation Instruction for Mechanical Tees/Crosses, Side Outlets(Rolled type and Threaded type), including Model XGQT 3,3S,3US.

Side outlet (mechanical cross) can be directly used to connect the branch pipes with the main steel pipe. Firstly, to open the hole with hole-cutting machine on steel pipes ,and clip the side outlet(mechanical cross)into the hole, around which are sealed by the gasket rings .Side outlet (mechanical cross)are categorized as threaded style and Grooved style. When be connected ,the threaded mechanical tee or mechanical cross should be applied with some compacting paint on it's outer screw thread ,and then roll thread around it to ensure the sealing performance of threaded joint.



1. Check the hole pickles.



2. Spread lubricant on gasket ring.



3. Put gasket seal in the Mechanical Tee.



4. Install the Mechanical Tee in the hole.



5. Install the bottom piece on the upper one of Mechanical Tee.



6. Secure the nuts and bolts of side outlet from both side.

## Installation Instruction for Flange, including Model XGQT09

Flange adaptor( Flange adaptor .threaded flange. flange )can be used for the transitional connection between the grooved pipe and the equipment & valves with flanges .The diameter ,location and measurement of the bolt hole on Flange adaptor are matching the bolts of international standards (GB9114.9115.9116.9119.9123-88)



1. Before installation, whether the groove meet the standard should be checked and then wipe away the pickles, iron rust, greasy dirt on gasket ring and pipe.



2. Assemble one part of flange on the pipe, and keep it in the groove of pipe



3. Put another part of flange in the groove, screw the bolts and nuts averagely on the two parts



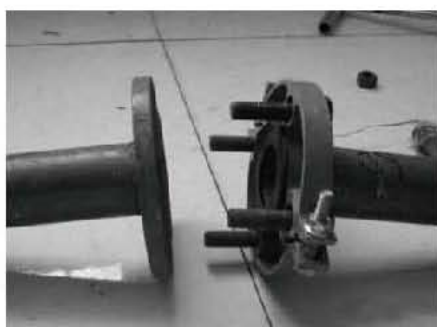
4. Check the gasket to keep the availability in any situation, spread lubricant on surface of gasket.



5. Assemble gasket in the place between pipe and flange groove, to keep the gasket in right orientation



6. Secure the bolts and refer to Table 5 for Bolt-Torque.



7. Insert standard bolts in bolt holes.



8. Insert standard bolts in the mated flange holes and screw nuts on them.



9. Secure the nuts and refer to Table 5 for Bolt-Torque.